

# MATRIX BLU

THE HI-END SOLUTION TO PROCESS LGP PANELS FOR BACKLIGHT APPLICATIONS EXPLOITING LASER TECHNOLOGY



*SEI iScan built-in laser engraving technology*



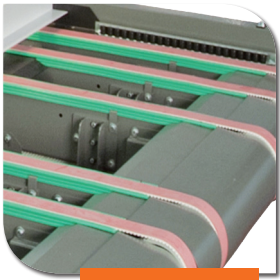
- **Matrix BLU** is the outcome of **SEI Laser**'s technical expertise and extensive experience in processing LGP panels for Backlight applications exploiting laser technology.
- **Matrix BLU** exploits proprietary laser technology to carry out micro-points on panels both standard and high illuminated panels up to 2000x3000 mm regardless of thickness for the given light guide (LGP). When standard panels are processed the output (producing top quality at the highest processing speed) is 10 times higher than the output

obtained by exploiting traditional laser technology, thanks to continuous cycle working.

- The core of **Matrix BLU** is the **ICARO BLU** software for LGP laser path machining; with **ICARO BLU** is easy to obtain a no compromise uniformity of brightness within a few steps.
- Processable material: PMMA sheets.
- **Matrix BLU** complies with the directive IEC EN 60825/1

THE LASER WAY

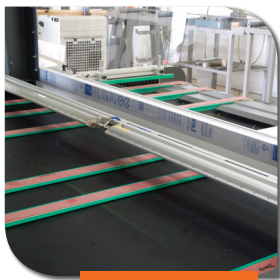




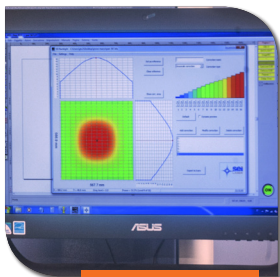
Feeding table made up of belts



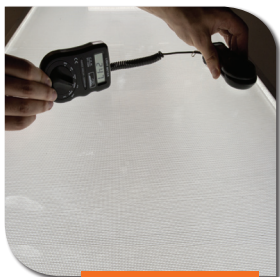
Reference side bar



Fumes suction/extraction



Software Icaro BLU



Brightness and homogeneity

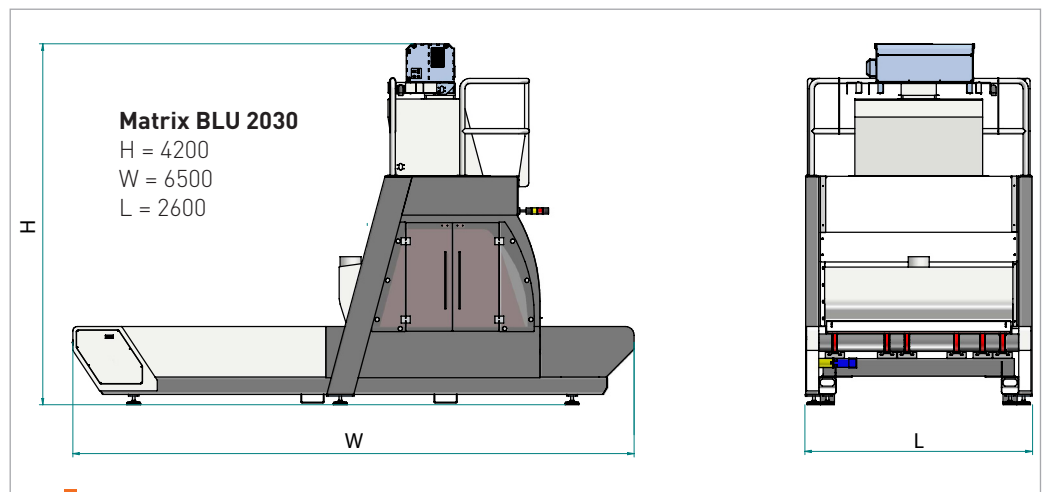
#### Main technical features:

Available model	Matrix BLU	
Processing technology	Proprietary SEI Laser	
Processable material	PMMA sheets	
Max. size of the panel (mm)	2000 x 3000	
Max. thickness of the panel (mm)	40	
Application fields	Visual	Lighting
Max. productivity (m <sup>2</sup> /h)	40	30
Panel brightness uniformity	>90%	
Control unit	PC Win 7 with SW Icaro BLU pre-installed	
Size (mm)	6500x2600x4200	
Weight (kg)	2500	
Compliance with norms and safety measures	2006/95/CE Low Voltage Directive	
	2006/42/CE Machinery Directive	
	2004/108/CE Electromagnetic Compatibility Directive	
IEC EN 60825-1 Laser		
Laser safety class	Class 1	



#### Main technical features:

- Electro-welded steel frame with external safety windows of the marking area and side shutters controlled by safety interlocks.
- Suction inlet suitable for the application.
- Feeding table made up of belts. Integrated sheet unloading operation controlled via software.
- Continuous cycle working (mark on fly mode with sheet in motion).
- Table for sheet loading (optional).



Matrix Blu

The product is CE marked.  
Features and system requirements may change without notice.